

# Class 3

New production consisting of spoiled, clean and decorated cans free of residual lubrication and 5182 lids. Must be 3004 or 3104 alloys only. This material can be baled or briquettes.

## Material Packaging Specifications

### Bales (TALDON)

- Material Thickness - <0.28 gauge
- Density – 14–22 lbs/cubic ft
- Bale size – min. 30 cubic ft.
- Dimensions – 24-40"x30-52"x40-72"

#### *Proper Banding:*

- Banding – min 6, max 10
- 10 gauge aluminum
- 5/8"x.020" steel
- 5/8"x.036" plastic
- 13 gauge steel
- Bales should separate into sections when banding/wire is cut
- Bales of uniform size are preferred
- Use of support sheets (cardboard, plastic, etc) is not acceptable

### High Density Bales

- Material Thickness - <0.28 gauge
- Density – 25-30 lbs/cubic ft
- Bale size – min. 40 cubic ft.
- Dimensions – 24-40"x30-52"x40-72"

#### *Proper Banding:*

- Banding – min 6, max 10
- 10 gauge aluminum
- 5/8"x.020" steel
- 5/8"x.036" plastic
- 13 gauge steel
- Bales should separate into sections when banding/wire is cut
- Bales of uniform size are preferred
- Use of support sheets (cardboard, plastic, etc) is not acceptable

## **Biscuits (TALDAK)**

- Material Thickness - <0.28 gauge
- Briquette Density – 35-55 lbs/cubic ft
- Briquette Dimensions – 10"x13"x10 ¼", 20"x6 ¼"x9"
- Bundle Dimensions – 41-44"x51-54"x54-56"
- Weight – max 6,000 lbs/bundle

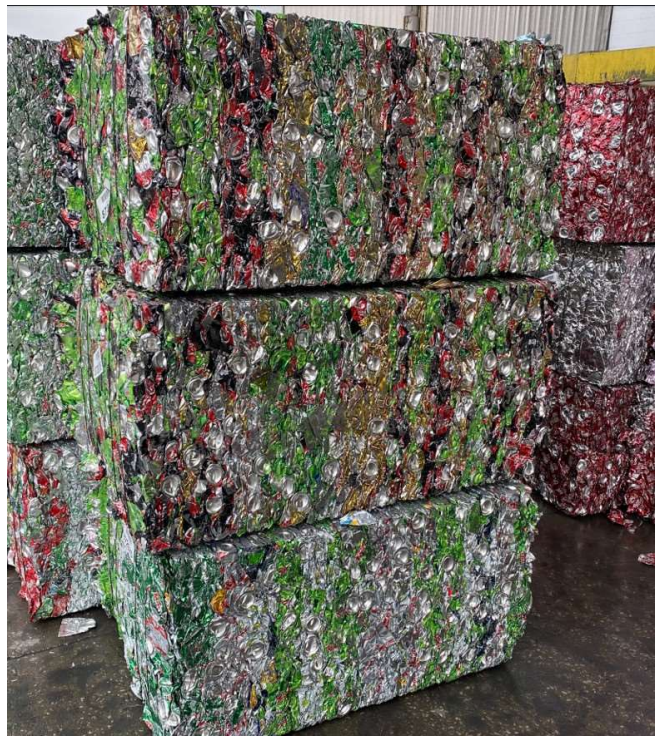
### *Proper Banding:*

- Banding slots in both directions (two vertical, min 4 horizontal)
- 5/8"x.020" steel
- 5/8"x.036" plastic

## **Examples of Proper Packaging**



**CLS-3 – Steel Bands and Pallet**

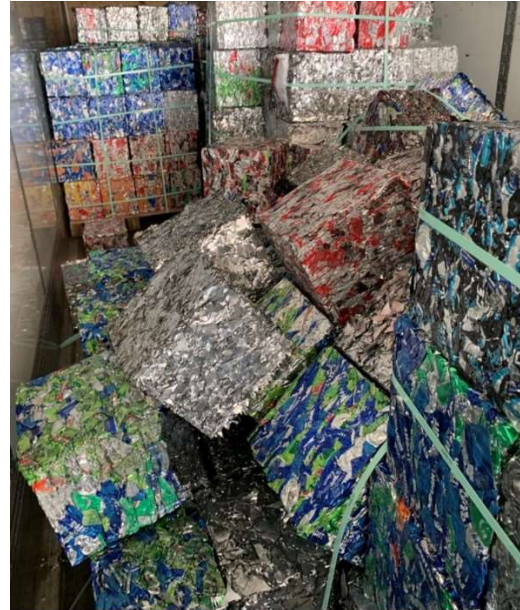


**Class 3 Bales**

# Examples of Improper Packaging



Wrapped



Busted Bale



Improperly Banded

## REJECTED LOADS

Due to space limitations, all rejected material must be removed as soon as possible. Material rejected at the time of delivery will automatically be reloaded on the truck it was delivered on. Material rejected and off loaded will have three working days to be removed from Logan Aluminum. If the rejected material has not been removed in the allotted time, a truck will be scheduled for pickup and the material sent collect to the vendor or location of the vendor's choice. The vendor is responsible for all costs of shipping and return for the rejected material.

# GENERAL INSPECTION

## INSPECTION REPORT DOCUMENTATION

Documentation of the inspection reports will be supplied in order to expedite settlement of issues such as weight discrepancies, downgrades and rejected loads.

## QUALITY VERIFICATION

Each load will be inspected upon delivery. The material will be verified that it meets the criteria established within the purchase specification agreement. The material will be inspected for items such as excessive moisture, oil, dirt, garbage, plastic, glass, non-aluminum contaminants, aluminum fines, nitrates, sulfates, safety hazards, packaging issues, contamination of any kind. The results of the material inspection may be subject to a load rejection or if agreed upon, the material may be downgraded. Issues noted during inspection will be photographed and documented to the shipper.

During inspection, a determination will be made as to whether the material meets the purchase specification. If the load is determined to meet expectations, no deduction will be made regarding contamination.

Items that will be subject to immediate rejection of the entire load if found during the inspection are butane lighters, aerosol cans, hypodermic needles, live ammunition, explosives, gasoline, propane bottles or other gas cylinders or bottles, medical waste / infectious materials, radioactive material, PCB's, mercury, asbestos, Freon, poisons, acids, fertilizer, rodents, excessive corrosion, oxidizers, flammable liquids, closed containers, crimped tubing, lead paint and other questionable items. The presence of these items poses a safety hazard to personnel and is not debatable.



# TRUCKS

## PREP

Drivers must exit the cab, give their keys to Logan personnel, and chock the wheels of their trailer.

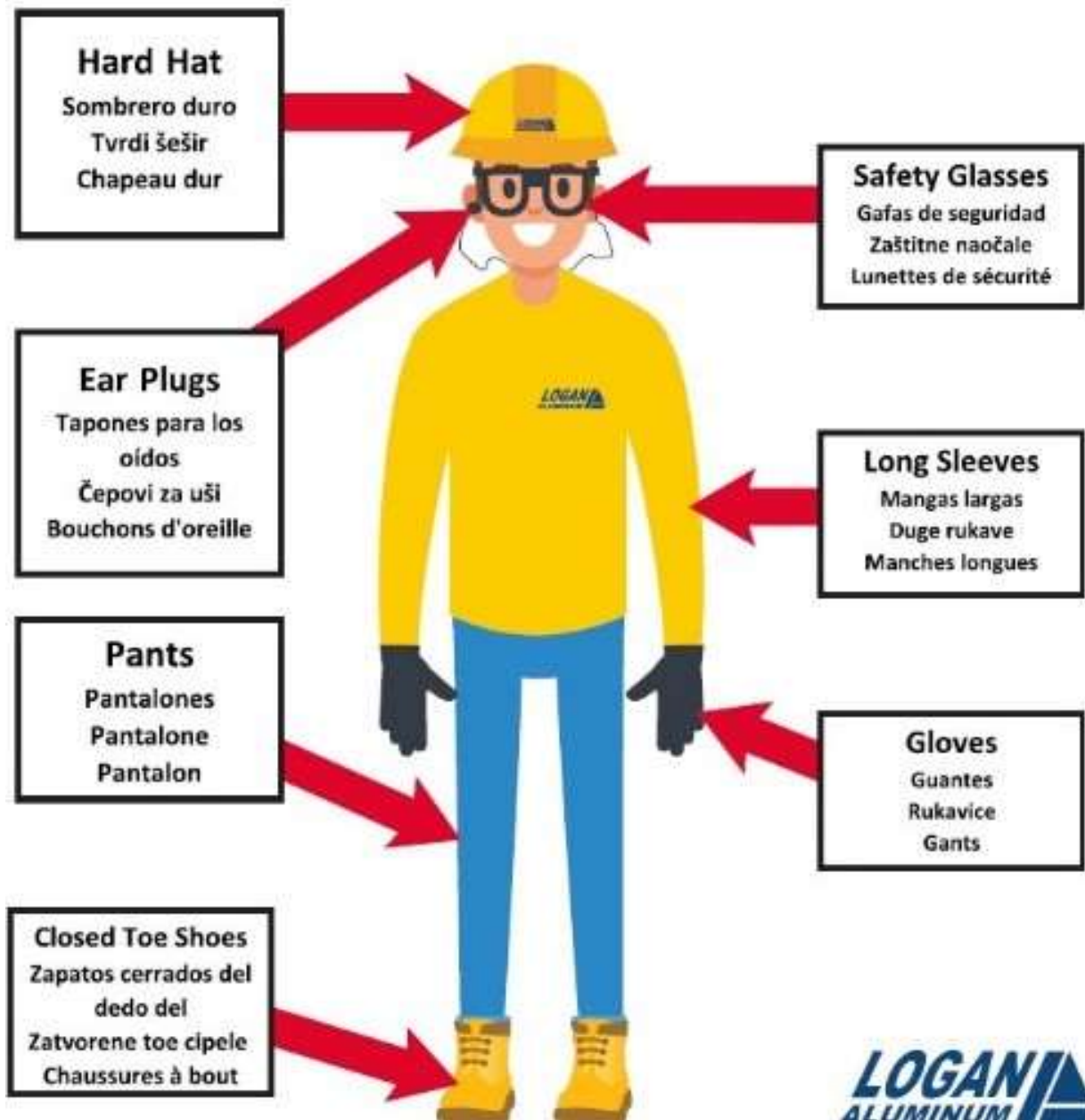
## SAFETY

Driver must stay in an area designated by Logan personnel while wearing hardhat, safety glasses & high visibility clothing.  
Clothing must consist of pants, long-sleeves, and closed-toe shoes.

## EXPECTATIONS FOR TRUCK DELIVERY

*PPE Requirements:* Safety Glasses, Hard Hat, Pants, Long Sleeve Shirt, Closed Toed Shoes, and High Visibility Clothing. If any of this is not worn when arriving at any dock, it will result in automatic rejection.

- Drivers must check in at Truck Processing with correct unload number and paperwork upon arrival.
- Drivers for all Inbound Deliveries to Logan Aluminum will leave their Driver's License at the Gatehouse upon check in. The Driver's License will be returned once the trucks have been correctly out-processed.
- Truck drivers will be instructed by Truck Processing Attendants of plant rules and required PPE. After being checked-in drivers will be sent to the truck staging area to wait for unloading.
- Truck drivers will wait at staging area with load secured. Operators will direct drivers to the designated area for unloading.
- Drivers are required to wear proper PPE when out of truck unstrapping load.
- If driver must get on trailer to unstrap load, safety rails must be attached to trailer. Safety rails are located at Metal Control, Hotmill unloading area, and Tarping areas.
- All drivers must chock the wheels of their trailer, before the unloading operator will start unloading/loading process.
- All drivers must give ignition key(s) to the unloading operator who will maintain possession of the key(s) until the unloading/loading process has been completed.
- Forklift operator will not start unloading trailer until all straps and/or chains are rolled up and/or put away.
- All drivers and passengers must remain **OUT OF THEIR TRUCK** and stay in the designated waiting areas provided by Logan Aluminum until the unloading/loading process has been completed.
- Absolutely **NO** cans, bottles, or butane lighters allowed onsite.
- All drivers are responsible for cleaning/sweeping out their own trailers into designated area provided by Logan Aluminum.
- No one other than Logan Aluminum personnel allowed on the dock areas at anytime.
- When unloading is complete driver will be instructed how to exit to the outbound scales.
- **ANY INDIVIDUALS THAT DO NOT FOLLOW LOGAN ALUMINUM SAFETY REQUIREMENTS WILL BE REQUESTED TO LEAVE THE PROPERTY IMMEDIATELY.**



## FLAT BED TRAILER

### EXPECTATIONS FOR TRUCK DELIVERY

Material must be side loaded such that it can be easily removed from the truck by forklift.

1. The load must remain secured until Logan personnel are at the truck for unloading.
2. Trucks must remain in line near the truck scale until called for unloading. Trucks must not proceed to the unloading area without permission of the Logan unloading personnel.
3. Drivers must follow all safety rules communicated to them when at the gatehouse. Drivers must stay with their truck. Drivers may enter the Recycle Receiving office but must not enter any production areas.
4. Dunnage must not be left at Logan and must leave with the truck.

# VAN TRAILER

## EXPECTATIONS FOR VAN DELIVERY

1. The minimum height requirement is 105 inches.
2. All vans must have floors in good condition. Any vans found to have unsafe floor conditions will not be unloaded.
3. Material must be braced or loaded in a manner to prevent material shifting. If the material has shifted it will not be unloaded if determined to be unsafe to the operator or damage to the trailer may occur.
4. Sufficient spacing must be maintained between the material and the roof/sides of the trailer. Material packed or wedged into the trailer will not be unloaded unless the trucking company or driver signs a waiver releasing Logan and Logan personnel of all liability.
5. Trucks must remain in line near the truck scale until called for unloading. Trucks must not proceed to the unloading area without permission of the Logan unloading personnel.
6. Drivers must follow all safety rules communicated to them when at the gatehouse. Drivers must stay with their truck. Drivers may enter the Recycle Receiving office but must not enter any production areas.
7. Dunnage must not be left at Logan and must leave with the truck.
8. Logan personnel will not be responsible for sweeping out trailers.