

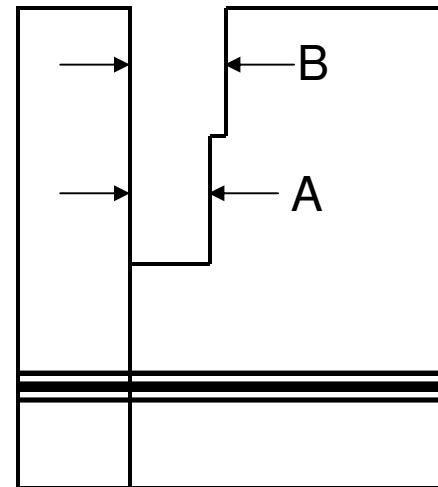


Sample Thickness Gauge

A – is a slot machined so that samples with more than 22% removed will drop to the lowest level. Samples that drop into A are too thin.

B – is a slot machined so that samples that have at least 14% of the original sample thickness will drop in. Samples that do not drop into B are too thick.

Samples machined to the proper depth will drop into B but not into A. This is a tool that we know is good for checking to see if a sample is machined correctly



Gauge made from two pieces of steel with 2 bolts holding them together