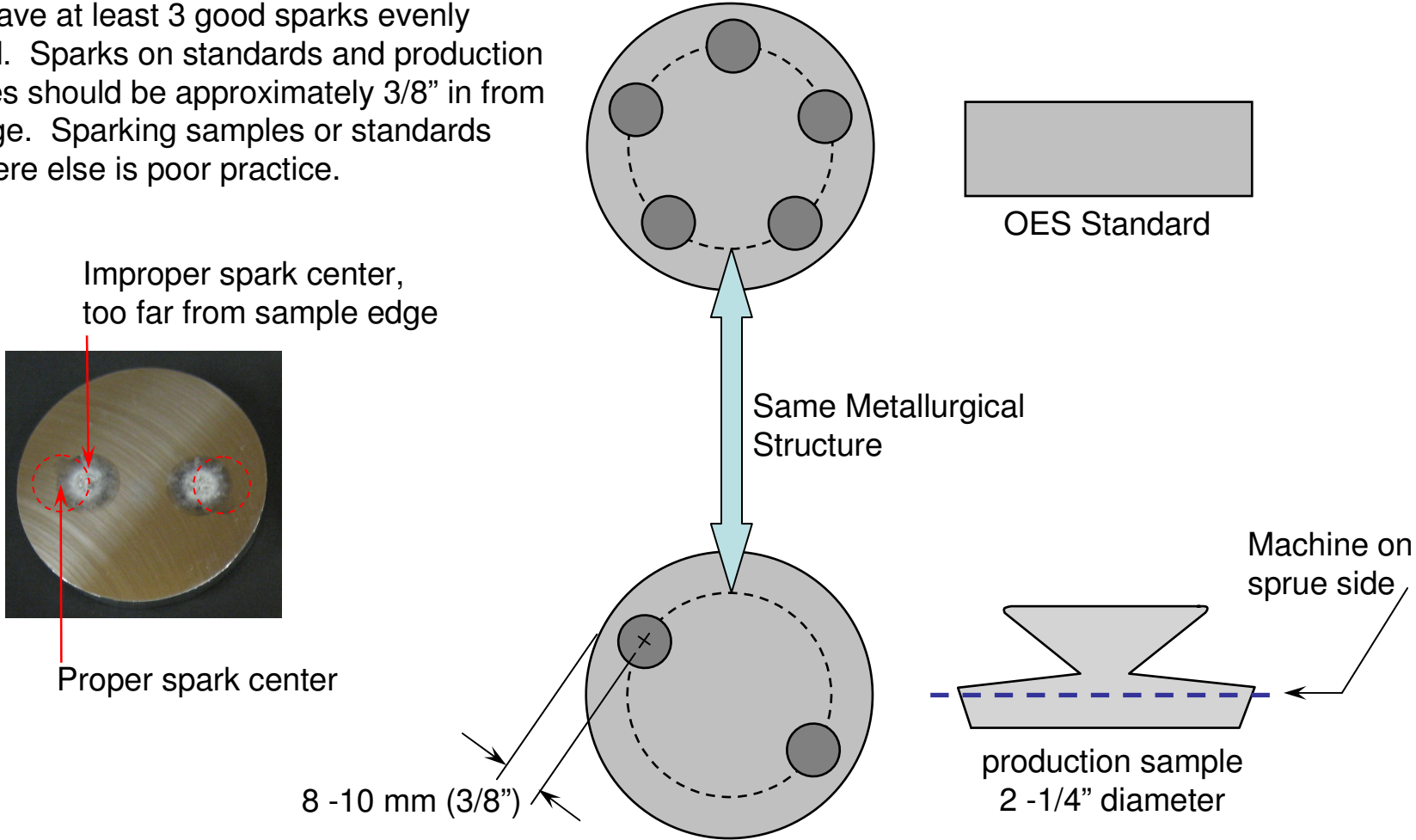


Best Practice: Spark Location and Quantity

Samples of 3xxx alloy must have at least 2 good sparks evenly spaced. Samples of 5182 must have at least 3 good sparks evenly spaced. Sparks on standards and production samples should be approximately 3/8" in from the edge. Sparking samples or standards anywhere else is poor practice.



Best Practice: Spark Location and Quantity

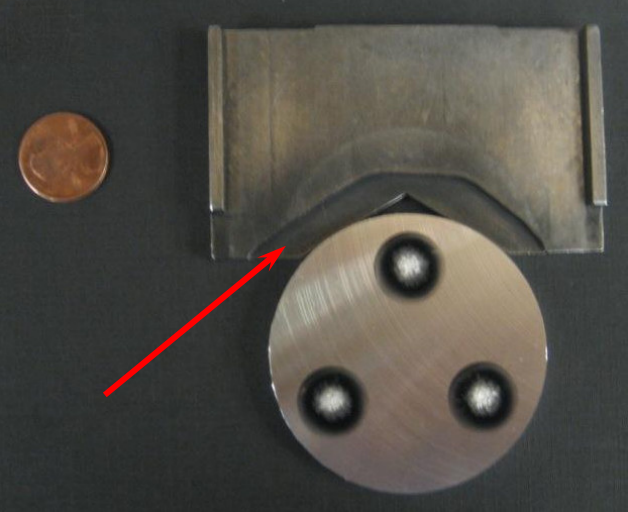


Example of spectrometer spark stand with sample backstop.

An easy way to ensure sparks on production samples and standards are always the correct distance from the edge is to use a sample backstop. A backstop can be made from a piece of stainless steel and designed to fit on your spark stand. It is made to be removable.



Top view



Bottom view

The underside of the backstop has been milled away so that any flashing that remains after sample milling does not prevent proper placement of the sample. See the arrows.